



THE SCENE AT SUMMIT

Newsletter of Summit Unitarian Universalist Fellowship
8778 Cottonwood Ave., Santee, CA 92071

Multi-Platform Sunday Services begin at 10:00 a.m.

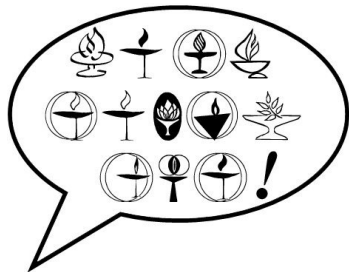
Theme: Inclusion

February 2

“The First Rule of Unitarian Universalism Is...”

Rev. KC Marie Pandell

Sometimes, Unitarian Universalism feels like the world's best kept secret. But how do we spread the good word when "Evangelism" becomes a dirty word?



February 9

“The Work of a Lifetime”

Rev. KC Marie Pandell

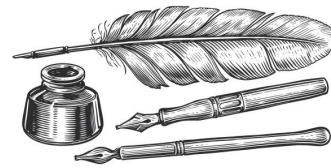
Inclusivity, at it's core, is no simple task. Saying someone is welcome, and showing them there is space for them are two very different things. Join Rev. KC on an exploration of why inclusion can feel sticky, and how we might approach it as spiritual practice and act of resistance.



February 16

“Why We Write” Summit Authors

Summit authors will talk about what compels them to write.



February 23

“Life is Like...”

Rev. KC Marie Pandell

Chocolate can be a delicious metaphor for the savors and stings of life: Smooth, sweet, and sometimes, a little bitter. Join Rev. KC for Summit's first Chocolate Communion; there will be sweets provided in Sanctuary -- Folks tuning in at home are encouraged to join in with their favorite treat.



The Mission Statement of Summit Unitarian Universalist Fellowship

In spiritual community, we commit ourselves to building a compassionate, just and sustainable world.



If you missed a service, or would like to see it again, you can watch it on our [SUUF MEDIA](#) YouTube Channel!



KC's Korner

~ Reverend KC Marie Pandell

Dear Summitarians and Friends:

One of the true tests, I think, of a good community is an understanding of impact vs intent. We, as Unitarian Universalists, understand this as one piece of our Covenanting process. You may have seen it stated in Covenant Groups, in the Minister's Book Group, or any other small group ministry: we assume best intentions. And I think for the average interaction, whether with loved ones or strangers, this is not a revolutionary thought. Assuming best intentions allows us to take a breath, maybe find a little grace, and above all: be curious. It's one of the ways, with loved ones, that we can find purchase in our conflict:

"I know you didn't mean to hurt my feelings when you said that, but it did. Can we talk about it?"

Sometimes, it can be a really lovely way to strengthen and grow our relationships. Even with strangers, or those we know less completely, perhaps especially in spaces where our privilege protects us, this thinking can be extremely helpful:

"Oh, that word you used to describe that person is outdated. Can we discuss new words that might be a better fit?"

It can certainly be painful to be on the receiving end of those conversations (Goodness knows I have as recently as last week!), but the trust people place in us when they are willing to call us in when our impact doesn't match our intent is really something special.

I write this two days after the 2025 Inauguration, and the world has been brimming with discourse around a certain salute from a certain South African billionaire – at the end of the day, whether someone thinks his intent was pure or not, the impact was felt worldwide, and many people are feeling angry, frightened, and fired up. In the coming days, months, even years, this discourse of what was meant vs what was felt will be important for all of us, as we interact

with one another, and how we approach the community outside our Summit home.

I mention this today to remind you that understanding impact vs intent is one of the best ways to build community, resiliency, and trust (even when trust is on Spirit's time). Learning together how to return to covenant and community after such unintentionally painful impact, and being able to recognize it not only personally, but globally, will be crucial for the work of liberation.

It's a tall order, but a worthy one, I think, that benefits us all, from our youngest community members, to our most marginalized, to our safest, and our most at-risk. From our chronically ill, our unhoused, to our wealthiest, our most well-educated, and everyone in between.

It is a privilege to have the opportunity to reflect on such situations, and it's a journey of reflection and understanding which I gladly go on with you.

All my love and blessings,

Rev. KC

(714) 869-7645

summitminister@gmail.com

MINISTER'S OFFICE HOURS

Reverend KC is delighted to receive your calls and emails. Her regular day off is Monday. She checks email on a limited basis on Friday, her study day. She is available for one-on-one meetings by appointment.

In Office Hours:

Tues: 10 am to Noon 2 pm to 5 pm
Thurs: 10 am to Noon 1pm to 5 pm

Zoom/Call/Etc (Zoom preferred):

Wed: 10 am to Noon 1 pm to-3 pm

Schedule an appointment: [Calendly Schedule](#)



PRESIDENTIAL PONDERINGS

~ DEBBIE WINGARD, BOARD PRESIDENT ~

Dear Friends,

The Board has been very active reviewing our ByLaws, not the most exciting work but very important for the health of our fellowship.

Immediately after service on Sunday, February 9th, we will be having a Congregational Meeting to vote on ByLaw changes. On January 24, an email went out to Summit members with details.

While most changes are clarifications to match our current practices, a few are substantive changes that we hope will help Summit function more smoothly. For example:

- ◆ It is sometimes difficult to get a quorum for voting, since there are people on our membership list who have not been seen for quite a while. While we are able to remove membership status, sometimes we are hoping members are just temporarily absent. We are proposing a new category of “inactive members” who will not have voting privileges, but can easily be moved back to active status and be able to vote.
- ◆ Given our current fellowship size, we have found it difficult to recruit leadership for the Board and key committees. Therefore, we are recommending we reduce the size of our Board of Directors. This will make it easier for our Nominating Committee to find volunteers, and existing volunteers can focus on activities in which they are most interested. We believe the Board will be just as effective with a smaller number of members.

Thank you for being part of our beloved community,

Debbie



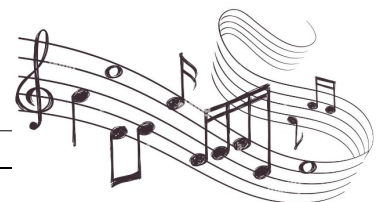
SUMMIT'S MUSIC PROGRAM

DUNCAN MATTHEW, MUSIC DIRECTOR



The Summit Choir is singing on the 2nd and 4th Sundays of the month. We would love to have more singers - please join us! We sound pretty good, we would sound even better with you!

Rehearsals are in the sanctuary on Wednesday nights from 6:30-8:00 p.m





LIFESPAN FAITH FORMATION NEWS

MARY CARTER-VAIL, DIRECTOR OF RELIGIOUS EXPLORATION

This month we move from the theme of Story to the theme of Inclusion. The practice of inclusion invites us to shift to deeply and authentically listening to the story of others with the intent to understand and welcome. This is a much-needed practice at this time when “othering” is being used to exclude and divide in the wider culture. Let us strive for inclusion and being a welcoming place for all.

Inclusion: Our theme for this month is the *Practice of Inclusion*. In our RE program, we talk about being a croissant rather than a bagel, as a way to open up a closed circle to always have a welcoming space for all. For children, this is a practice of not leaving out or welcoming in. We will be playing with ways inclusion shows up and invites us to build community together.

Your Spiritual Practice of Inclusion: How is this a powerful spiritual practice for you? In what ways do you actively seek to welcome in, rather than leave out? How can you be more inclusive? Explore this practice and find ways to expand your “inclusion muscles” this month and beyond.

Soul Work: Our Soul Work table will continue to be part of the cozy corner in the Sanctuary. We will have mini story books to fill with art or written words. If you have an idea to share, let Mary know so we can expand some of the activities on the table. Meanwhile, there is always something available to work with during the service. Take something to your seat as you listen to the service. The Soul Work Table and Cozy Corner are for all ages so please enjoy!

Join us for All Ages Faith Formation at Summit:

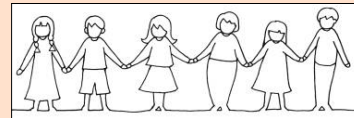


VOLUNTEERS NEEDED! We are growing our Religious Exploration program and expanding to an all-ages Faith Formation program. Join us and consider being part of this important part of our

congregational life. (Volunteers who work with children will need to be background checked and

take Mandated Reporter training.) Contact Mary at summitdre@gmail.com to explore ways you can be part of Faith Formation at Summit.

Our February Theme is the Practice of Inclusion: We will be gathering in RE at 10 am on Sundays for Religious Exploration activities. Our children and youth will participate in the service until after the “Time for All Ages” story. We will then split into age centered groups to engage in our activities in the Religious Exploration area and/or outside (depending on weather conditions). After the service, we will be joining our families in the Salon for sustenance & community social time. Nursery childcare will be available until 12 noon.



February 2 – The Practice of Not Leaving People Out – We begin this month by exploring ways to include the people in our congregation by making Cards of Care. These cards are sent out mid-month to share a bit of love with each other. Our group will also do an Inclusion Scavengers Hunt to see how we practice inclusion at Summit. Come make a card or write a message in the Salon after the service.

February 9 – The Practice of Not Leaving Stories Out– This week we will continue to explore ways to include and to listen to the stories of folks who are usually left out. We will have a tea party as part of this weeks lesson as we discover how inclusion makes us a stronger community.

February 16 – The Practice of Not Leaving Love for Ourselves Out – This week, we talk about how parts of ourselves sometimes get left out. To explore this, we will get into body positivity as well as the importance of self-love and self-acceptance. We have some fun games to play, including "I Love My Body" Charades.

(cont. on next page)

February 23 - The Practice of Not Leaving Nature Out – We will finish our month in the Summit Children’s Garden as we connect nature and nurture seeds, plants, soil and the garden critters. We will be preparing and planting our spring garden together. Our garden is a way of inviting and including our neighbors as well.

These are the plans at the beginning of the month, and they may be adapted as our community needs adapt, so please watch the weekly Children’s

Religious Exploration Email. To receive the weekly email, send your email address to Mary at summitdre@gmail.com.

With deepest love and brightest blessings,

Mary

Mary Carter-Vail
she/they
Director of Religious Exploration

Children’s Religious Exploration Committee

Mission Statement:

Our Mission is to create a safe and welcoming spiritual home for children & youth through creative exploration of the Unitarian Universalist Principles and Sources.



Summit is a community of volunteers—by volunteers, for volunteers, with the *support* of our amazing staff.

Where will your place(s) be in the Summit community this year?

We welcome YOUR participation!

∞ COMMUNITY EVENTS ∞

February 9 after Service

Congregational Meeting for SUUF members (see details on page 3)

February 21 at 5:15pm

Potluck and Free Concert at Summit (see details on page 6)

February 23 after Service

Safety Meeting

We will go over the plan in the event of an emergency on the Summit campus.

POTLUCK AND FREE CONCERT at SUMMIT

Come join us at Summit for an evening of food, fellowship, and live music. Our musical guests will be JIM & KAREN EVANS! Aka, "Sentimental Journey SD"

Jim and Karen Evans are experienced musicians who write and perform both original music and a variety of oldies for pre- baby boomers and beyond. Jim (guitar and vocals) and Karen (viola and vocals) comprise the duo Sentimental Journey SD.



Friday February 21st 2025, 5:15 to 8 p.m.

Potluck in the Summit Salon from 5:15 to 6:30pm

Desserts served in the greeting room starting at 6:30pm

Concert begins in the Sanctuary at 7pm

Everyone is invited to join in either or both gatherings.

Contact Mark Weedman

markatspectrum@hotmail.com or 619-334-5300 to RSVP. Let Mark know the dish you would like to bring.

ADULT LIFE ENRICHMENT

THE SUMMIT UU BOOK CLUB MULTI-PLATFORM OPTIONS!

The Summit UU Book Club meets on the First Tuesday, at 7pm. The group meets both in person in the Library and via Zoom, hosted by Debbie Wingard.

February 4 we will be discussing
Three Weeks with My Brother, by Nicholas Sparks.

Next month, on March 4, we will be discussing and selecting our books for the next year. Join us!

Everyone is welcome, even new members - either to participate or listen. If you have any questions, please ask Cheryl at esmreck@outlook.com
— Cheryl Smreck



GRIEF SUPPORT GROUP

Rev. KC, Facilitator

Rev. KC leads a Grief Group for Summitarians and friends who are grieving the loss of a loved one. The group will meet on the 1st Sunday (on February 2) in the Sanctuary at Noon.

WELCOMING & MEMBERSHIP COMMITTEE

Greetings Summit!

Last Christmas we visited our son Lucas in Huntsville, Alabama. It's easy to fall into the trap of thinking that Alabama is a solid conservative state, yet I have found that this is not the case. An example is that there were two Trump/Vance signs still up on the street Lucas lives on, yet around the corner was a Pride Flag on a house. There seems to be more diversity present than one might think at first glance.

One day we went to Decatur, Alabama to visit a historic train depot. There was a constant stream of visitors while we were there. On one hand, I felt that some of them tended to be on the more conservative side of the religious and political spectrum than I am, yet our common interest in trains and railroading seemed to override any differences in this area. I need to remember to find and focus on common areas we share when talking with others.

We had the opportunity to visit the Huntsville Unitarian Church one Sunday. While we at Summit have repurposed a strip mall to make our campus, they have taken a traditional church building and made it their own. The building originally had stained glass windows, which the Huntsville UU Church kept. The windows depicted stories from Jesus's life, including how we should treat one another. I believe these stories are universal and could be found in other religious traditions. So instead of being put off by the windows, I was reminded of the universality of many of these traditions and how we incorporate them into our beliefs.

Summit continues to have visitors who attend both online and in person. I need to remember not to make any assumptions about them when I first meet them. While we come from different backgrounds with possible different views on some issues, I believe we have a common desire to have meaning in our lives. Our visitors have decided to come check us out and I appreciate this. If possible, I should try and find common areas I share with them, so perhaps I can start to build a meaningful relationship with them.

~ Jim Weed—HDSurf@aol.com or look for me at Summit on most Sundays.

☞ SOCIAL JUSTICE IN ACTION ☜

The Social Justice in Action Committee is collecting foodstuffs, easy open cans and small toiletries for homeless students at Grossmont College through the Gizmo's Kitchen program. Please use the bin for donations in the Greeting area. Thanks!

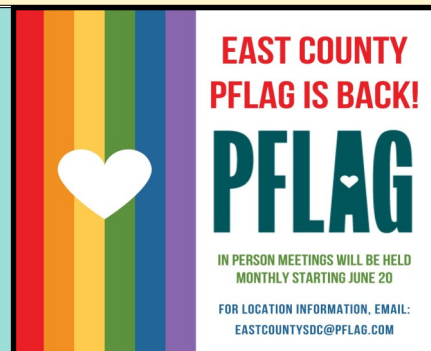


The Social Justice in Action Committee meets at noon in the Summit library on the second Sunday of each month. All members and friends interested in taking action on enhancing justice, freedom and the environment are invited to join us. If you would like to learn more, contact summitsjia@gmail.com. Everyone welcome!

The next SJiA meeting will be Sunday, February 9, at 12 Noon in the Library and on zoom at <https://zoom.us/j/98852027774>

Sponsored by the Social Justice in Action Committee, PFLAG meetings continue on the third Wednesday of the month. All parents, friends, and allies of the LGBTQ+ community are welcome to attend.

For times and location please contact Ryn Corbeil or email eastcountysdc@pflag.com.



The UUA Disaster Relief Fund



The UUA stands with its congregations and is ready to provide assistance to help congregations and their communities recover in the aftermath of disasters.

The [Disaster Relief Fund](#) disburses grants to UU congregations and recognized UU non-profit entities.

For those looking to support disaster relief through the UUA, including CA wild-fire relief, you can donate online by clicking [HERE](#).



AFFINITY GROUPS

POETRY GROUP

Led by Margo Mariana

Please feel free to bring a short piece you have written to share with the group to get some feed-back support.

We meet in the Summit Library the first Monday of each month.

Please call Margo Mariana at (619) 312-0903 if you have questions and/or to register.



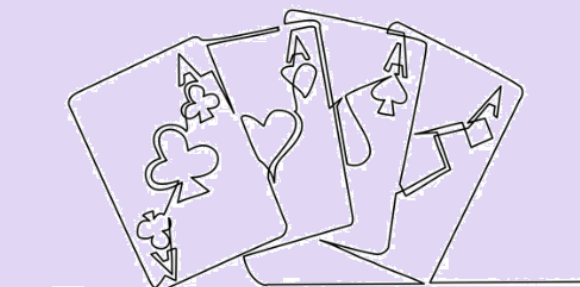
Next meeting is
Monday, February 3
10:00 a.m.—12pm

Bridge Club

Come join Summit's friendly and casual Bridge Group

We play Bridge in the Salon on Tuesdays from 1:00 to 3:00 p.m.

Questions? please contact:
Jamie Cleland; jamie.cleland@gmail.com



MEN'S DISCUSSION GROUP #2

Summit's Second Men's Fellowship and Support Group meets on the 1st & 3rd Wed, from 7-8:30 pm. We invite you to join us if you wish. We are an "open" meeting in the sense that any man who wants to can participate if he so wishes.

Our group is going to start meeting in person, in the Library. If you prefer, you may continue to join us online, too. You can use any Apple or PC/Android device (desktop computer, laptop, iPad or other tablet, smart phone) to access our meeting, but it must have a microphone and a camera.

To get the link, please email Denny at denny.braun@usfamily.net.

THE SUMMIT TUESDAY NIGHT MEN'S GROUP

Is now hosting open house meetings on the last Tuesday of each month. Any and all men in the Summit community are invited. This month the OPEN HOUSE meeting is Tuesday February 25 from 6:30 to 8pm in the library at Summit.

We are a supportive circle of men who share and listen to each other. We invite you to visit with us.

Interested men may contact Mark Weedman for details, (619) 334-5300 or markatpspectrum@hotmail.com.



Denominational News

YOU → Summit UU Fellowship → SD Cluster →

Pacific SW Service Area → Pacific Western Region → Unitarian Universalist Association



[UUA President the Rev. Dr. Sofia Betancourt shared this statement](#) in response to executive orders issued by the US President. It includes additional resources to take action to support your congregation, community, and loved ones.



SIDE WITH LOVE

“What is love calling you to do?”

[Side with Love](#) is a public advocacy campaign that seeks to harness love’s power to stop oppression. It is sponsored by the [Unitarian Universalist Association](#) and all are welcome to join. [Subscribe to get updates.](#)



UUA GENERAL ASSEMBLY

BALTIMORE • JUNE 19 - 22, 2025

General Assembly (GA) is the annual meeting of our Unitarian Universalist Association (UUA). Participants worship, witness, learn, connect, and make policy for the Association through democratic process. Anyone may attend; congregations must certify annually to have voting delegates.

From June 18 - 22, 2025, the 64th UUA General Assembly will be a multi-platform event with the main stage at the Baltimore Convention Center in Baltimore, Maryland.

Registration is now open! Click [HERE](#) to register.

An Invitation to Exhibit from the UUA:

We are reaching out to personally invite you to become an Exhibitor or Sponsor at General Assembly 2025 in Baltimore. If you or someone you know is leading an innovative program, running a nonprofit, designing curriculum, conducting research, or offering products or services that align with the values of the Unitarian Universalist Association (UUA), we would love to have you join us.

Please visit <https://www.uua.org/ga/exhibit/exhibiting> or contact Rev. Dr. Kimi Floyd Reisch at [kreisch@uua.org](mailto:kreich@uua.org) with any questions.



Summit Unitarian Universalist Fellowship
8778 Cottonwood Ave.
Santee, CA 92071

OFFICE HOURS

Tues & Fri — 9 am to 3 pm
Wed.— 9am to 1pm

MINISTER

Rev. KC Marie Pandell
714-869-7645
SummitMinister@gmail.com
[Calendly Schedule](#)

DIRECTOR OF RELIGIOUS EXPLORATION

Mary Carter-Vail
619-562-0833, ex 3
SummitDRE@gmail.com

MUSIC DIRECTOR

Duncan Matthew
719-568-3832
Duncan.matthew49@gmail.com

OFFICE ADMINISTRATOR

Nelwyn Del Frate
619-562-0833, ex. 1
SummitUUF@gmail.com

PROPERTY STEWARD

Mark Weedman
markatspectrum@hotmail.com

WEEKLY ENEWS EDITOR

Pam Kerr: SUUFVolunteer@yahoo.com

SCENE AT SUMMIT NEWSLETTER EDITOR

Nelwyn Del Frate: summitUUF@gmail.com

Board of Trustees

Debbie Wingard—*President*

Carol Legard—*Vice President*

Dan Hand—*Secretary*

Brenda McGuinness—*Treasurer*

Directors:

Ryn Corbeil, Sally Jackson, Al Mork,
Jenny Saar, Suzanne McQuaide



February, 2025

About SUUF Publications

Please send submissions for the monthly SCENE AT SUMMIT NEWSLETTER via e-mail on or soon after the 20th, to summitUUF@gmail.com

Please send submissions for the eNews, the weekly announcements, to SUUFVolunteer@yahoo.com by Tuesday noon. Check the eNews and website for additional news throughout the month.

If you have any questions, call the office, 619-562-0833, or e-mail us at SummitUUF@gmail.com.